

# Chemical dosing system

## CDS-W-E



The chemical dosing system CDS-W washer extractors with liquid chemicals.

The wash machines are being supplied fully automatic, meaning that the required chemicals are requested by an electrical signal, so that the chemical dosing system then measures fast and accurately the required amount of chemicals and transfers them by water injection to the machine requesting the chemicals.



A system consist of:

- Stainless steel cabinet containing the measuring unit and the controller.
- Diaphragm pumps for efficient delivery of the chemicals
- Flow meters for accurate measurement of the chemical amount to be delivered.
- Pneumatically actuated process valves
- „Touchscreen“ controller to supervise and control the process of dosing and delivery.

Lab-Pro GmbH  
Dorfstrasse 19  
4806 Wikon / Schweiz

Tel.: +41 62 745 16 00  
Fax: +41 62 745 16 01

[www.lab-pro.ch](http://www.lab-pro.ch)

# Chemical dosing system CDS-W-E

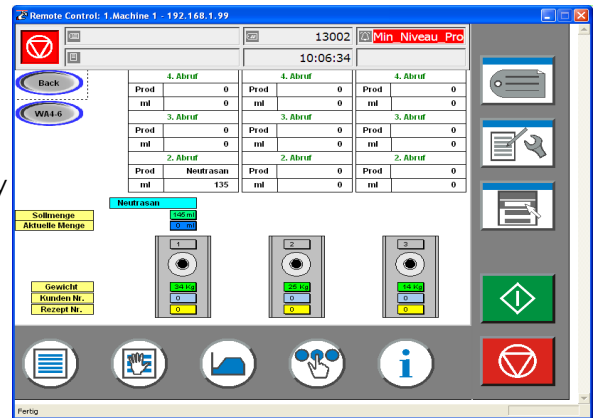


## Process visualization

The chemical dosing system CDS-W is a modular system and can, depending on its configuration supply 3, 6 or 8 washer extractors.

The smallest version can be used to supply 3 washer extractors. Such a system can later still be extended by adding modular components.

The controller can be adapted easily to the specific requirement of the laundry. Daily, weekly, monthly as well as yearly consumption data can be viewed on the controller. Further on the screen is shown, which valves are open and which amount of chemical is being sent to which machine.



All components (valves, flow meters and hoses) are designed for low contamination so that they are quickly washed out. Comparing to systems with peristaltic pumps maintenance work and therefore cost of maintenance can be greatly reduced. Further a calibration of the system is not required.

## Spezifikation:

Width:	1000 mm
Height:	800 mm
Depth:	400 mm
No of chemicals:	11
No of wash extractors:	3, 6 or 9
Chemical density:	0.7 - 1.5 kg per Liter

## Controller

The fully automatic microprocessor controller has a 6.4" TFT screen including process visualization. The industrial control further includes a „Touchscreen“ and is therefore easy to use and to configure.

The whole process is visualized. This means that on the screen it is shown, which chemicals are currently dosed and which chemicals are pending in the queue and therefore being transferred next.

Important consumption data, such as daily, weekly, monthly but also yearly consumption of liquid but also powder chemicals are being recorded and can be viewed on the control.

The signals of the wash extractors are connected directly to the controller by multiwire cables. These signals can be interpreted as Relais or Relais enhanced. Therefore also older wash extractors can be connected too.

The controller can be connected to a local area network (LAN) so that the controller can be supervised from a standard PC. Further external access and diagnosis is possible so that corrections can be made remotely.

# Chemical dosing system CDS-W-E



## Extended data acquisition:

To store all process data over a long time frame, the controller can be connected over the local area network (LAN) to the internet. The data can then be stored externally. Each single dosing or alarm can be viewed even years after.

**WSM4 Dosierungen: 2013-03-26**

Counter	Zeit	Menge	Produkt	Alarm
473	2013-03-26 06:31:39	60	Mulan Citro	-
474	2013-03-26 06:31:55	003	Na-Hypochlorit	-
475	2013-03-26 06:32:11	262	Power Activ	-
477	2013-03-26 07:03:58	140	Power Activ	-
478	2013-03-26 07:04:11	142	Personnill	-
479	2013-03-26 07:04:21	72	Novan Sigma	-
480	2013-03-26 07:51:12	46	Neutrasan	-
481	2013-03-26 08:09:54	66	Novan Sigma	-
482	2013-03-26 08:10:06	131	Mulan Citro	-
483	2013-03-26 08:10:25	940	Power Activ	-
484	2013-03-26 08:10:52	651	Na-Hypochlorit	-
485	2013-03-26 08:32:31	92	Select Detergent	-
486	2013-03-26 08:32:45	179	Personnill	-
487	2013-03-26 08:33:00	222	Power Activ	-
488	2013-03-26 08:33:10	66	Novan Sigma	-
489	2013-03-26 09:19:47	46	Neutrasan	-
490	2013-03-26 09:52:48	68	Novan Sigma	-
491	2013-03-26 09:53:01	131	Mulan Citro	-
492	2013-03-26 09:53:19	944	Power Activ	-
493	2013-03-26 09:53:46	653	Na-Hypochlorit	-
494	2013-03-26 10:16:25	90	Select Detergent	-
495	2013-03-26 10:16:39	171	Personnill	-
496	2013-03-26 10:16:55	220	Power Activ	-
497	2013-03-26 10:17:04	66	Novan Sigma	-
498	2013-03-26 11:01:57	46	Neutrasan	-
499	2013-03-26 11:29:29	68	Novan Sigma	-
500	2013-03-26 11:29:41	133	Mulan Citro	-
501	2013-03-26 11:30:00	340	Power Activ	-
502	2013-03-26 11:30:26	651	Na-Hypochlorit	-
503	2013-03-26 11:52:42	90	Select Detergent	-
504	2013-03-26 11:52:55	183	Personnill	-
505	2013-03-26 11:53:11	220	Power Activ	-
506	2013-03-26 11:53:20	66	Novan Sigma	-
507	2013-03-26 12:37:20	46	Neutrasan	-

**Verbräuche von 2013-03-26 bis 2013-03-26**

Nr	Produkt	Ist
2	Mulan Citro	0.6470
3	Neutrasan	0.2300
6	Personnill	1.0040
8	Na-Hypochlorit	2.8660
9	Osmafin Appretex	0.3250
10	Power Activ	2.8300
26	Novan Sigma	0.7300
48	Select Detergent	0.3620

## Security

Die Data are being stored in a high security data center close to Basel. The whole system is built fail save and backup are regularly made during the day. Webserver is user and password protected so that authorized person only have access to the dosing data.

## Service

Moreover, such a systems allows that our technician can access the database for periodical checking and troubleshooting.

